



Maranhão Foreign Trade Statistics

April 2006

INDEX

Maranhão.....pages 03 to 08

<i>Table 01 – Maranhão Foreign Trade – January-April 2006.....</i>	<i>page 03</i>
<i>Graphic 01 – Maranhão Exports – January-April 2005/2006.....</i>	<i>page 03</i>
<i>Graphic 02 – Maranhão Imports – January-April 2005/2006.....</i>	<i>page 04</i>
<i>Graphic 03 – Maranhão Trade Balance – January-April 2005/2006.....</i>	<i>page 04</i>
<i>Graphic 04 – Maranhão Trade Flow – January-April 2005/2006.....</i>	<i>page 04</i>
<i>Table 02 – Maranhão Product Elaboration Level of Exports – January-April 2006.....</i>	<i>page 04</i>
<i>Table 03 – Maranhão Product Categories of Exports – January-April 2006.....</i>	<i>page 05</i>
<i>Table 04 – Maranhão Exports by NCM – January-April 2006.....</i>	<i>page 05</i>
<i>Graphic 05 – Maranhão Exports by NCM – January-April 2006.....</i>	<i>page 05</i>
<i>Table 05 – Maranhão Major Exported Products – January-April 2006.....</i>	<i>page 06</i>
<i>Table 06 – Maranhão Major Buyer Countries – January-April 2006.....</i>	<i>page 06</i>
<i>Table 07 – Major Export Enterprises from Maranhão – January-April 2006.....</i>	<i>page 06</i>
<i>Table 08 – Maranhão Product Elaboration Level of Imports – January-April 2006.....</i>	<i>page 07</i>
<i>Table 09 – Maranhão Product Categories of Imports – January-April 2006.....</i>	<i>page 07</i>
<i>Table 10 – Maranhão Major Imported Products – January-April 2006.....</i>	<i>page 07</i>
<i>Table 11 – Maranhão Major Supplier Countries – January-April 2006.....</i>	<i>page 08</i>
<i>Table 12 – Maranhão Major Imported Enterprises – January-April 2006.....</i>	<i>page 08</i>

AN OVERVIEW OF MARANHÃO FOREIGN COMMERCE – JANUARY-APRIL 2006

After the first 04 months of 2006 Maranhão exports grew up almost 32%, compared to the same period of the latest year, closing April with US\$ 504,266 millions. The trade balance is still deficient, but this loss has been decreased, mainly because of imports reduction. Taking a look just at April foreign commerce operations, it's verified a surplus among exports and imports. This fact happened for the first time in this year. (See Graphic 03 – Maranhão Trade Balance – January-April – 2005/2006).

Concerning the exports destination ranking, US are still leading it, followed by Holland, Switzerland, China and Spain. Switzerland and China have been increasing their demands and, as a consequence of it, the US market share has been shortened – before it was 44% and nowadays it is around 29%. (See Table 08 – Maranhão Major Buyer Countries – January-April 2006).

The major exported products are still aluminium (and its derived products), iron (and its derived products) and soya beans. They correspond to 97,62% of what is exported by Maranhão and, after taking a look at this percentage, it's possible to see there are either few diversity of exported products or exporter enterprises, mainly small and medium ones.

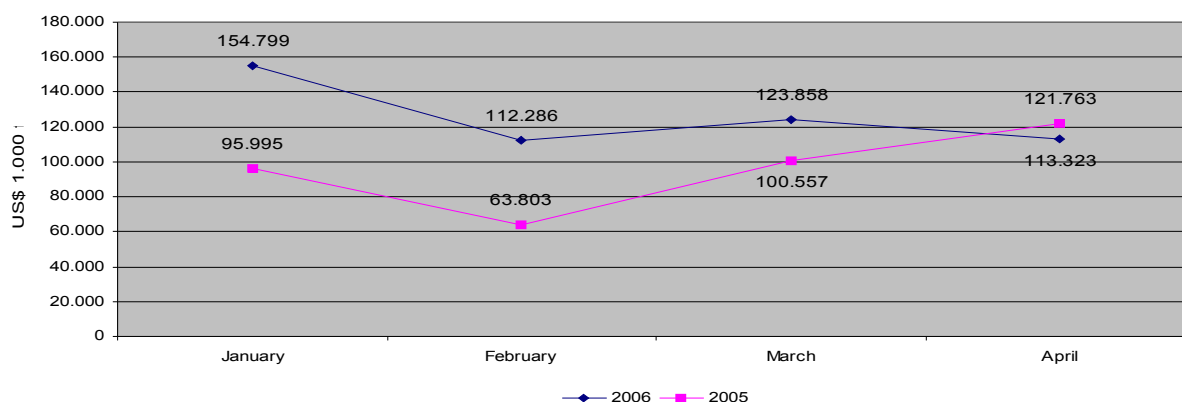
There are below some tables and graphics which might provide a better idea of Maranhão foreign commerce operations.

Table 01 – Maranhão Foreign Trade – January-April 2006

	US\$ 1.000 fob		Var. % (b/a)
	Jan-Apr 06 (b)	Jan-Apr 05 (a)	
Exports	504.266	382.118	31,97%
Imports	565.837	217.645	159,98%
Trade Balance	-61.571	164.473	-137,44%
Trade Flow	1.070.103	599.763	78,42%

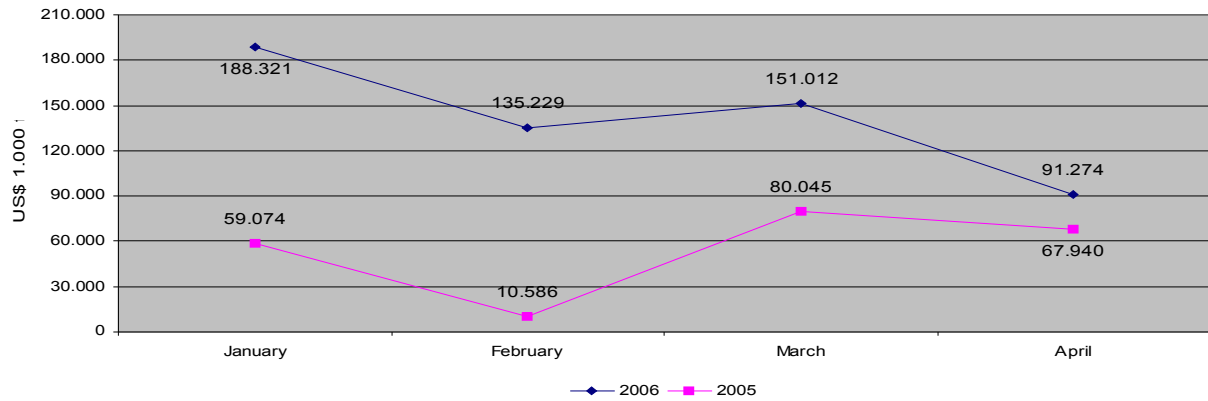
Source: SECEX/AliceWeb; Elaborated: FIEMA/CIN

Graphic 01 - Maranhão Exports - January-April - 2005/2006



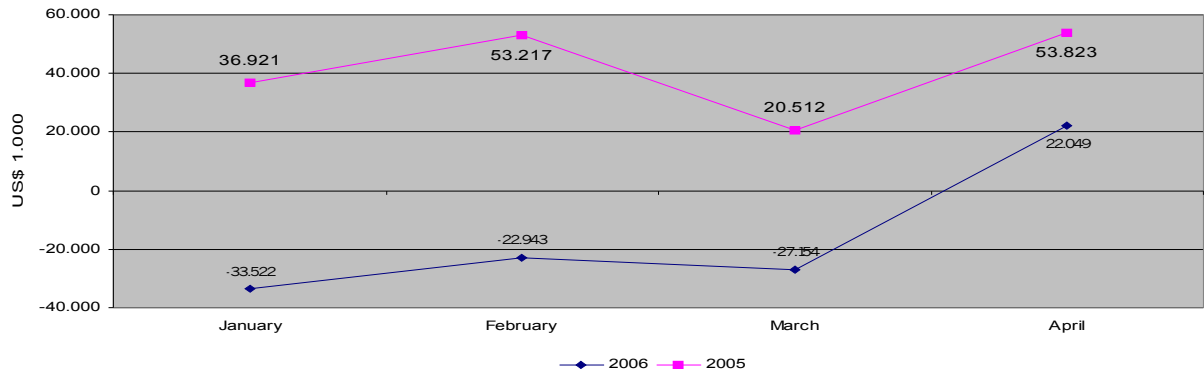
Source: SECEX/AliceWeb; Elaborated: FIEMA/CIN

Graphic 02 - Maranhão Imports - January-April - 2005/2006



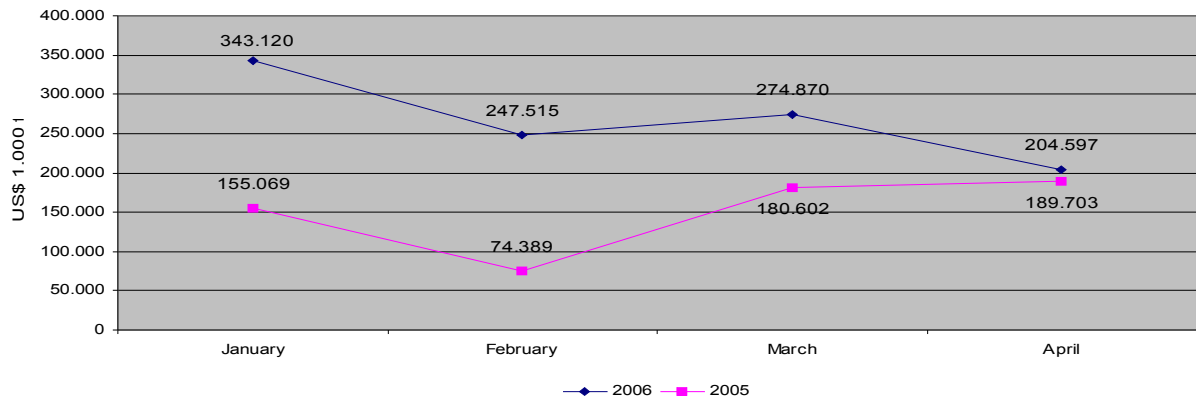
Source: SECEX/AliceWeb; Elaborated: FIEMA/CIN

Graphic 03 - Maranhão Trade Balance - January-April - 2005/2006



Source: SECEX/AliceWeb; Elaborated: FIEMA/CIN

Graphic 04 - Maranhão Trade Flow - January-April - 2005/2006



Source: SECEX/AliceWeb; Elaborated: FIEMA/CIN

Table 02 – Maranhão Product Elaboration Level of Exports – January-April 2006

	US\$ 1.000 fob					Var. % (b/a)
	Jan-Apr 06 (b)	%	Jan-Apr 05 (a)	%		
<i>Basic</i>	110.852	21,98%	80.149	20,97%	38,31%	
<i>Industrialized (A + B)</i>	390.604	77,46%	299.503	78,38%	30,42%	
<i>Semimanufactured (A)</i>	335.734	66,58%	254.757	66,67%	31,79%	
<i>Manufactured (B)</i>	54.870	10,88%	44.746	11,71%	22,63%	
<i>Special Operations</i>	2.810	0,56%	2.466	0,65%	13,95%	
Total	504.266	100,00%	382.118	100,00%	31,97%	

Source: SECEX/AliceWeb; Elaborated: FIEMA/CIN

Table 03 – Maranhão Product Categories of Exports – January-April 2006

	US\$ fob				Var. % (b/a)
	Jan-Apr 06 (b)	%	Jan-Apr 05 (a)	%	
Capital Goods	14.970	N/A	-	-	-
Intermediary Goods	500.226.895	99,20%	376.621.418	98,56%	32,82%
Consumption Goods	1.214.356	0,24%	3.030.093	0,79%	-59,92%
Durable	510.447	0,10%	2.447.708	0,64%	-79,15%
Not Durable	703.909	0,14%	582.385	0,15%	20,87%
Other Operations	2.809.776	0,56%	2.467.252	0,65%	13,88%
Total	504.265.997	100,00%	382.118.763	100,00%	31,97%

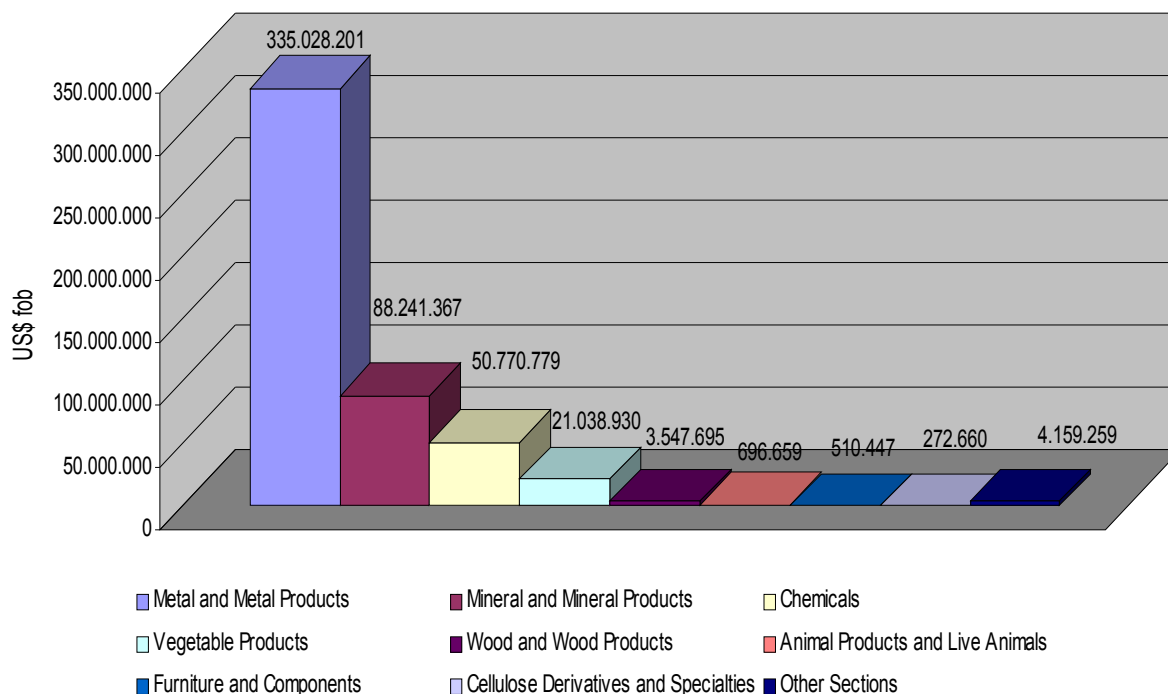
Source: SECEX/AliceWeb; Elaborated: FIEMA/CIN

Table 04 – Maranhão Exports by NCM – January-April 2006

NCM	Section	Jan-Apr 06 (b)		Jan-Apr 05 (a)		Var. % (b/a)
		US\$ fob	%	US\$ fob	%	
XV	Metal and Metal Products	335.028.201	66,44%	254.329.400	66,56%	31,73%
V	Mineral and Mineral Products	88.241.367	17,50%	63.999.446	16,75%	37,88%
VI	Chemicals	50.770.779	10,07%	36.623.612	9,58%	38,63%
II	Vegetable Products	21.038.930	4,17%	13.963.400	3,65%	50,67%
IX	Wood and Wood Products	3.547.695	0,70%	4.507.828	1,18%	-21,30%
I	Animal Products and Live Animals	696.659	0,14%	582.385	0,15%	19,62%
XX	Furniture and Components	510.447	0,10%	2.508.526	0,66%	-79,65%
X	Cellulose Derivatives and Specialties	272.660	0,05%	1.458.012	0,38%	-81,30%
	Other Sections	4.159.259	0,82%	4.146.154	1,09%	0,32%
	Total	504.265.997	100,00%	382.118.763	100,00%	31,97%

Source: SECEX/AliceWeb; Elaborated: FIEMA/CIN

Graphic 05 - Maranhão Exports by NCM - January-April 2006



Source: SECEX/AliceWeb; Elaborated: FIEMA/CIN

Table 05 – Maranhão Major Exported Products – January-April 2006

Product	Jan-Apr 2006 (b)		Jan-Apr 2005 (a)		Var. % (b/a)
	US\$ fob	%	US\$ fob	%	
Non-alloy pig iron containing by weight 0.5% or less of phosphorus	130.256.600	25,83%	153.660.460	40,21%	-15,23%
Aluminium alloys	108.727.276	21,56%	45.756.527	11,97%	137,62%
Agglomerated Iron Ores	96.042.019	19,05%	54.912.413	14,37%	74,90%
Aluminium, not alloyed	88.087.197	17,47%	55.105.183	14,42%	59,85%
Calcined Alumina	43.321.448	8,59%	34.073.448	8,92%	27,14%
Other Soya Beans	21.038.930	4,17%	13.904.806	3,64%	51,31%
Board Consumption – Fuel and Lubricants for Vessels	4.790.733	0,95%	-	-	-
Rutoside (rutin) and its derivatives	2.329.211	0,46%	1.840.877	0,48%	26,53%
Other Products	9.672.583	1,92%	22.865.049	5,98%	-57,70%
Total	504.265.997	100,00%	382.118.763	100,00%	31,97%

Source: SECEX/AliceWeb; Elaborated: FIEMA/CIN

Table 06 – Maranhão Major Buyer Countries – January-April 2006

Country	Jan-Apr 2006 (b)		Jan-Apr 2005 (a)		Var. % (b/a)
	US\$ fob	%	US\$ fob	%	
United States	145.399.996	28,83%	168.710.182	44,15%	-13,82%
Holland	88.178.886	17,49%	62.377.319	16,32%	41,36%
Switzerland	52.604.717	10,43%	14.912.035	3,90%	252,77%
China	43.172.571	8,56%	9.255.692	2,42%	366,44%
Spain	25.591.282	5,07%	17.619.662	4,61%	45,24%
Argentina	20.887.746	4,14%	14.503.466	3,80%	44,02%
Colombia	17.720.019	3,51%	76.983	0,02%	N/A
Trinidad E Tobago	14.301.335	2,84%	22.951.693	6,01%	-37,69%
Austria	14.184.688	2,81%	1.672.060	0,44%	748,34%
Other Countries	82.224.757	16,31%	70.039.671	18,33%	17,40%
Total	504.265.997	100,00%	382.118.763	100,00%	31,97%

Source: SECEX/AliceWeb; Elaborated: FIEMA/CIN

Table 07 – Major Export Enterprises from Maranhão – January-April 2006

Enterprise	Jan-Apr 06 (b)		Jan-Apr 05 (a)		Var. % (b/a)
	US\$ fob	%	US\$ fob	%	
Alcoa Alumínio S/A	131.598.389	26,10%	43.822.746	11,47%	200,30%
Billiton Metais S/A	93.979.652	18,64%	66.693.249	17,45%	40,91%
Companhia Vale Do Rio Doce	88.087.197	17,47%	63.999.446	16,75%	37,64%
Viena Siderúrgica Do Maranhão S/A	34.499.812	6,84%	37.811.601	9,90%	-8,76%
Companhia Siderúrgica Vale Do Pindaré	23.714.432	4,70%	18.009.804	4,71%	31,68%
Abalco S/A	22.369.785	4,44%	22.333.512	5,84%	0,16%
Siderúrgica Do Maranhão S/A	19.362.368	3,84%	16.187.575	4,24%	19,61%
Gusa Nordeste S/A	18.426.507	3,65%	19.786.563	5,18%	-6,87%
Cargill Agrícola S A	13.459.898	2,67%	8.886.746	2,33%	51,46%
Fergumar Ferro Gusa Do Maranhão Ltda	12.592.237	2,50%	22.490.940	5,89%	-44,01%
Margusa-Maranhao Gusa S.A.	12.066.105	2,39%	21.316.968	5,58%	-43,40%
Cosima - Siderúrgica Do Maranhão Ltda.	9.595.139	1,90%	17.557.009	4,59%	-45,35%
Bunge Alimentos S/A	7.579.032	1,50%	3.656.575	0,96%	107,27%
Alcan Alumina Ltda	4.933.650	0,98%	-	-	-
Merck S/A	2.658.598	0,53%	2.550.164	0,67%	4,25%
Petróleo Brasileiro S A Petrobras	2.329.211	0,46%	1.840.877	0,48%	26,53%
Cikel Brasil Verde Madeiras Ltda	1.685.083	0,33%	2.137.556	0,56%	-21,17%
Indústria De Portas Brazil S/A	855.060	0,17%	873.958	0,23%	-2,16%
Laminit S/A Lâminas E Compensados	733.374	0,15%	947.964	0,25%	-22,64%
Slc Agrícola Ltda	684.740	0,14%	1.504.370	0,39%	-54,48%
Empáf - Empresa De Armazenagem	607.467	0,12%	390.013	0,10%	55,76%
Lisboa Moveis Ltda	512.313	0,10%	877.599	0,23%	-41,62%
Industrial E Comercial Tocantins Ltda	355.753	0,07%	-	-	-
Itapagé S/A Celulose Papéis E Artefatos	272.660	0,05%	1.118.405	0,29%	-75,62%
Balestreri Do Brasil Exp. E Imp. Ltda	239.656	0,05%	225.625	0,06%	6,22%
Continental Suprimentos Marítimos Ltda	190.682	0,04%	180.694	0,05%	5,53%

Table 07 – Major Export Enterprises from Maranhão – January-April 2006 (cont.)

Enterprise	Jan-Apr 06 (b)		Jan-Apr 05 (a)		Var. % (b/a)
	US\$ fob	%	US\$ fob	%	
Continental Metropolitana Indústria E Comercio	190.639	0,04%	76.711	0,02%	148,52%
Corcovado Granitos Ltda	154.170	0,03%	-	-	-
T C Maya Da Silva	98.858	0,02%	50.661	0,01%	95,14%
Qualimar Comercio Importação E Exportação Ltda	89.192	0,02%	170.400	0,04%	-47,66%
Other Enterprises	344.338	0,07%	6.621.032	1,73%	-94,80%
Total	504.265.997	100,00%	382.118.763	100,00%	31,97%

Source: SECEX/AliceWeb; Elaborated: FIEMA/CIN

Table 08 – Maranhão Product Elaboration Level of Imports – January-April 2006

	US\$ 1.000 fob				Var. % (b/a)
	Jan-Apr 06 (b)	%	Jan-Apr 05 (a)	%	
Basic	6.045	1,07%	8.956	4,11%	-32,50%
Industrialized (A + B)	559.792	98,93%	208.688	95,88%	168,24%
Semimanufactured (A)	3.210	0,57%	3.746	1,72%	-14,31%
Manufactured (B)	556.582	98,36%	204.943	94,16%	171,58%
Special Operations	-	-	-	-	-
Total	565.837	100,00%	217.645	100,00%	159,98%

Source: SECEX/AliceWeb; Elaborated: FIEMA/CIN

Table 09 – Maranhão Product Categories of Imports – January-April 2006

	US\$ fob				Var. % (b/a)
	Jan-Apr 06 (b)	%	Jan-Apr 05 (a)	%	
Capital Goods	57.279.449	10,12%	16.516.274	7,59%	246,81%
Intermediary Goods	56.851.872	10,05%	38.286.728	17,59%	48,49%
Consumption Goods	458.722	0,08%	95.973	0,04%	377,97%
Durable	295.890	0,05%	1.090	0,00%	N/A
Not Durable	162.832	0,03%	94.883	0,04%	71,61%
Fuels and Lubricants	451.246.757	79,75%	162.746.607	74,78%	177,27%
Total	565.836.800	100,00%	217.645.582	100,00%	159,98%

Source: SECEX/AliceWeb; Elaborated: FIEMA/CIN

Table 10 – Maranhão Major Imported Products – January-April 2006

Product	Jan-Apr 06 (b)		Jan-Apr 05 (a)		Var. % (b/a)
	US\$ fob	%	US\$ fob	%	
"Gasoleo" (Diesel Oil)	417.680.001	73,82%	156.702.240	72,00%	166,54%
Diesel-eletric locomotives	44.817.480	7,92%	9.275.000	4,26%	383,21%
Aviation Spirit	30.667.156	5,42%	-	-	-
Sodium hydroxide (caustic soda) in aqueous solution	14.149.824	2,50%	7.429.340	3,41%	90,46%
Petroleum coke, calcined	11.263.921	1,99%	5.503.189	2,53%	104,68%
Pitch	5.089.559	0,90%	2.481.458	1,14%	105,10%
Rails of steel, weighting 44,5 kg or more per linear metre	3.215.128	0,57%	593.100	0,27%	442,09%
Bituminous coal, not agglomerated	2.899.600	0,51%	6.044.182	2,78%	-52,03%
Monoammonium phosphate&mx thereof w diamonium phosphate,in pack	2.781.162	0,49%	2.927.229	1,34%	-4,99%
Axles, wheels and parts of railway carriage	2.475.355	0,44%	8.416	N/A	N/A
Other Products	30.797.614	5,44%	26.681.428	12,26%	15,43%
Total	565.836.800	100,00%	217.645.582	100,00%	159,98%

Source: SECEX/AliceWeb; Elaborated: FIEMA/CIN

Table 11 – Maranhão Major Supplier Countries – January-April 2006

Country	Jan-Apr 2006 (b)		Jan-Apr 2005 (a)		Var. % (b/a)
	US\$ fob	%	US\$ fob	%	
India	133.365.223	23,57%	111.525.523	51,24%	19,58%
United States	121.738.213	21,51%	25.810.809	11,86%	371,66%
Singapore	80.185.898	14,17%	45.721.405	21,01%	75,38%
South Korea	51.631.951	9,12%	-	-	-
Philippines	35.595.238	6,29%	-	-	-
Japan	35.269.807	6,23%	5.031	N/A	N/A
Saudi Arábia	26.349.662	4,66%	-	-	-
Venezuela	17.558.731	3,10%	-	-	-
Colombia	13.108.425	2,32%	2.911.016	1,34%	350,30%
Canada	11.527.437	2,04%	2.295.942	1,05%	402,08%
Other Countries	39.506.215	6,98%	29.375.856	13,50%	34,49%
Total	565.836.800	100,00%	217.645.582	100,00%	159,98%

Source: SECEX/AliceWeb; Elaborated: FIEMA/CIN

Table 12 – Major Import Enterprises from Maranhão – January-April 2006

Empresa	Jan-Apr 06 (b)		Jan-Apr 05 (a)		Var. % (b/a)
	US\$ fob	%	US\$ fob	%	
Petróleo Brasileiro S A Petrobras	433.331.757	76,58%	157.480.984	72,36%	175,16%
Companhia Vale Do Rio Doce	62.238.794	11,00%	17.641.775	8,11%	252,79%
Alcoa Alumínio S/A	23.828.212	4,21%	14.375.013	6,60%	65,76%
Refinaria De Petróleo Ipiranga S A	15.015.400	2,65%	-	-	-
Billiton Metais S/A	13.243.696	2,34%	9.895.938	4,55%	33,83%
Abalco As	4.330.324	0,77%	2.491.354	1,14%	73,81%
Bunge Fertilizantes S/A	2.343.335	0,41%	2.593.638	1,19%	-9,65%
Primo Schincariol Indústria De Cervejas E Refr.	2.311.273	0,41%	3.455.935	1,59%	-33,12%
Moinhos Cruzeiro Do Sul S A	2.150.823	0,38%	2.129.268	0,98%	1,01%
Yara Brasil Fertilizantes S/A	1.946.601	0,34%	2.524.299	1,16%	-22,89%
Other Enterprises	5.096.585	0,90%	5.057.378	2,32%	0,78%
Total	565.836.800	100,00%	217.645.582	100,00%	159,98%

Source: SECEX/AliceWeb; Elaborated: FIEMA/CIN